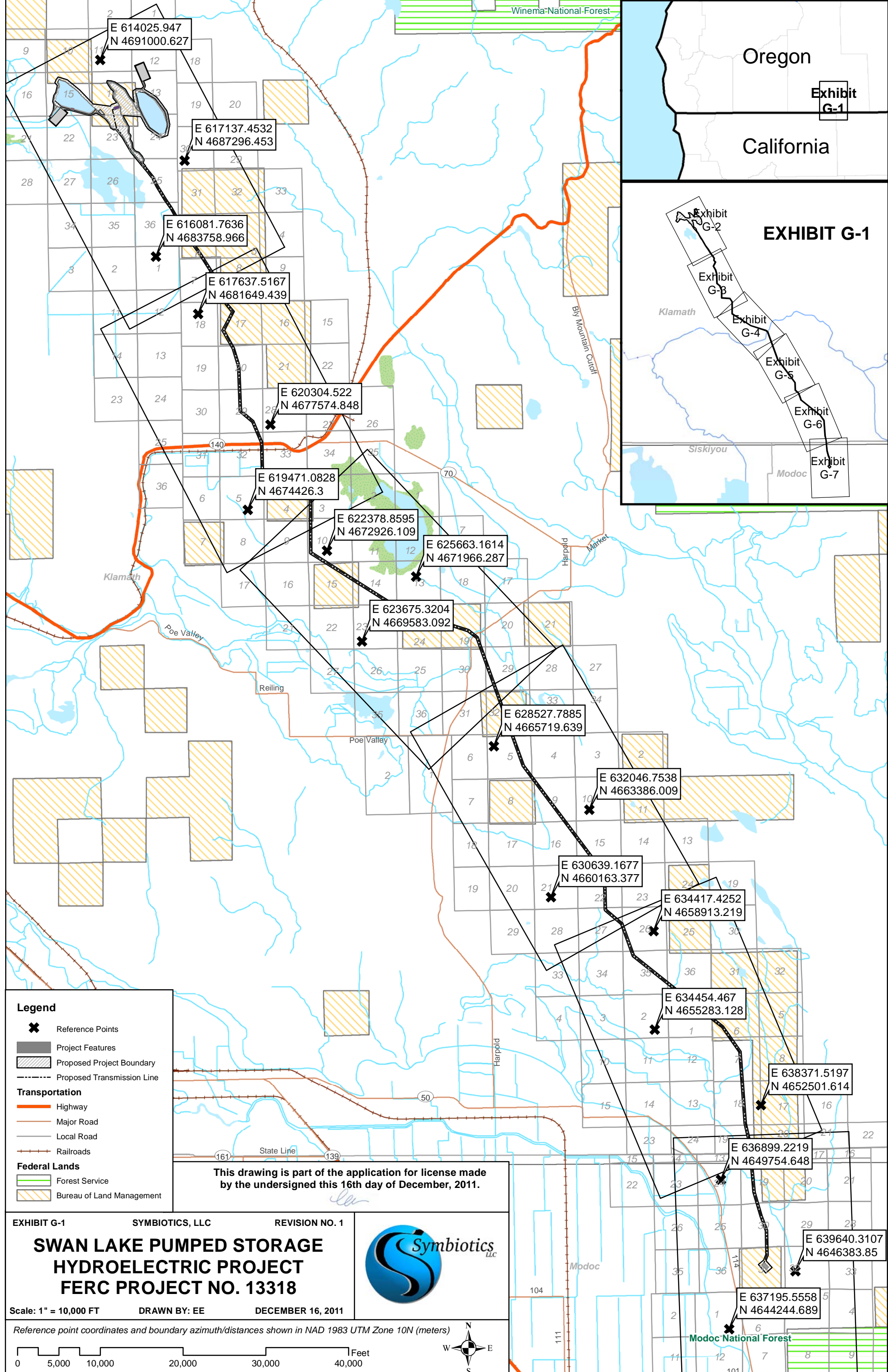


EXHIBIT G

Project Maps



Legend

- Reference Points
- Project Features
- Proposed Project Boundary
- Proposed Transmission Line

Transportation

- Highway
- Major Road
- Local Road
- Railroads

Federal Lands

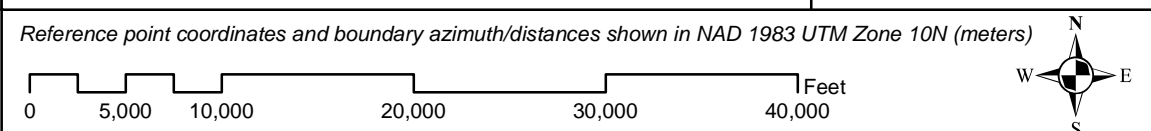
- Forest Service
- Bureau of Land Management

This drawing is part of the application for license made by the undersigned this 16th day of December, 2011.

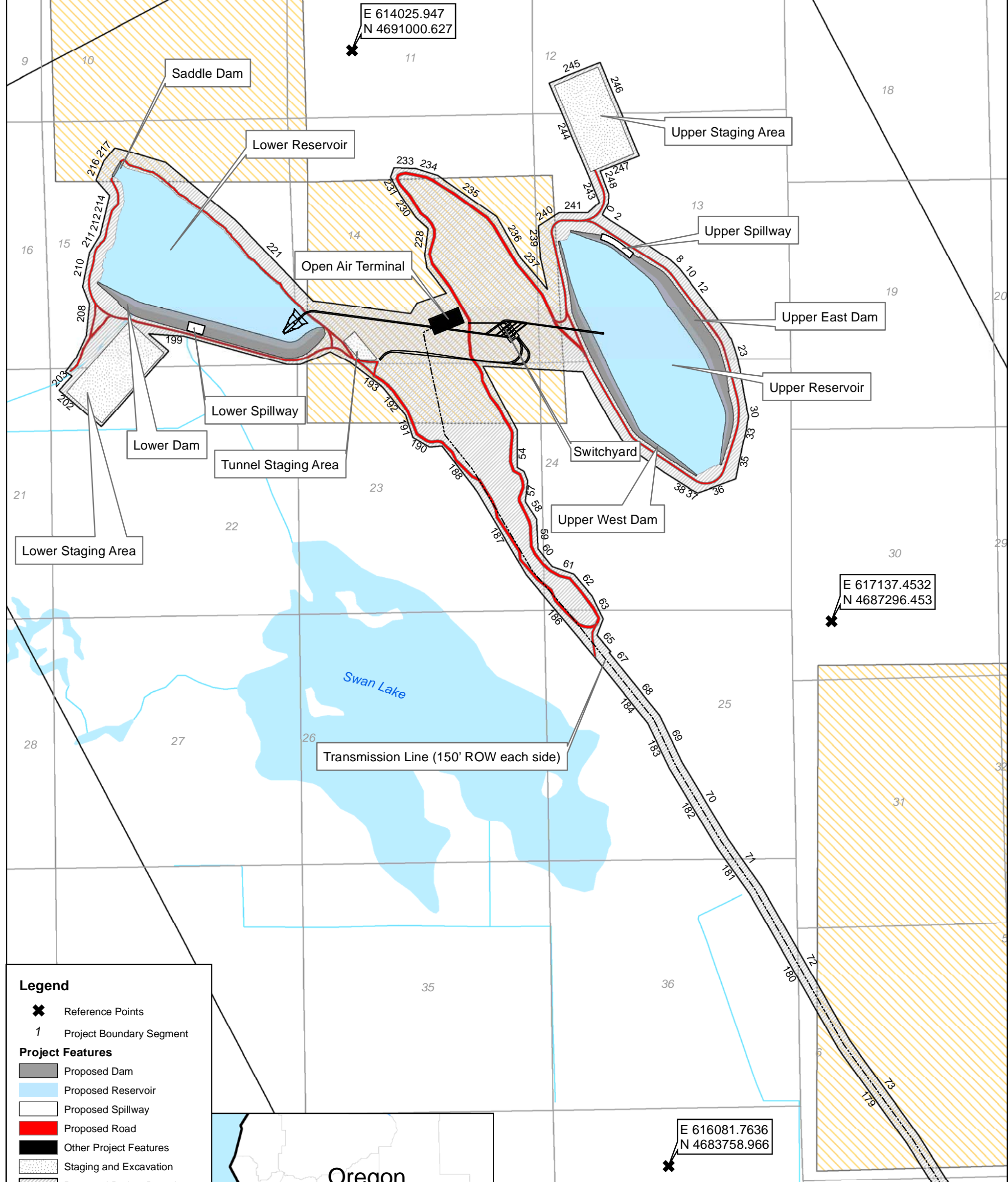
EXHIBIT G-1 SYMBIOTICS, LLC REVISION NO. 1

SWAN LAKE PUMPED STORAGE HYDROELECTRIC PROJECT
FERC PROJECT NO. 13318

Scale: 1" = 10,000 FT DRAWN BY: EE DECEMBER 16, 2011



- E 614025.947
N 4691000.627
- E 617137.4532
N 4687296.453
- E 616081.7636
N 4683758.966
- E 617637.5167
N 4681649.439
- E 620304.522
N 4677574.848
- E 619471.0828
N 4674426.3
- E 622378.8595
N 4672926.109
- E 625663.1614
N 4671966.287
- E 623675.3204
N 4669583.092
- E 628527.7885
N 4665719.639
- E 632046.7538
N 4663386.009
- E 630639.1677
N 4660163.377
- E 634417.4252
N 4658913.219
- E 634454.467
N 4655283.128
- E 638371.5197
N 4652501.614
- E 636899.2219
N 4649754.648
- E 639640.3107
N 4646383.85
- E 637195.5558
N 4644244.689



- Legend**
- ✕ Reference Points
 - 1 Project Boundary Segment
- Project Features**
- Proposed Dam
 - Proposed Reservoir
 - Proposed Spillway
 - Proposed Road
 - Other Project Features
 - Staging and Excavation
 - Proposed Project Boundary
 - Proposed Transmission Line
- Transportation**
- Highway
 - Major Road
 - Local Road
 - Railroads
- Federal Lands**
- Forest Service
 - Bureau of Land Management



This drawing is part of the application for license made by the undersigned this 16th day of December, 2011.

EXHIBIT G-2 SYMBIOTICS, LLC REVISION NO. 1

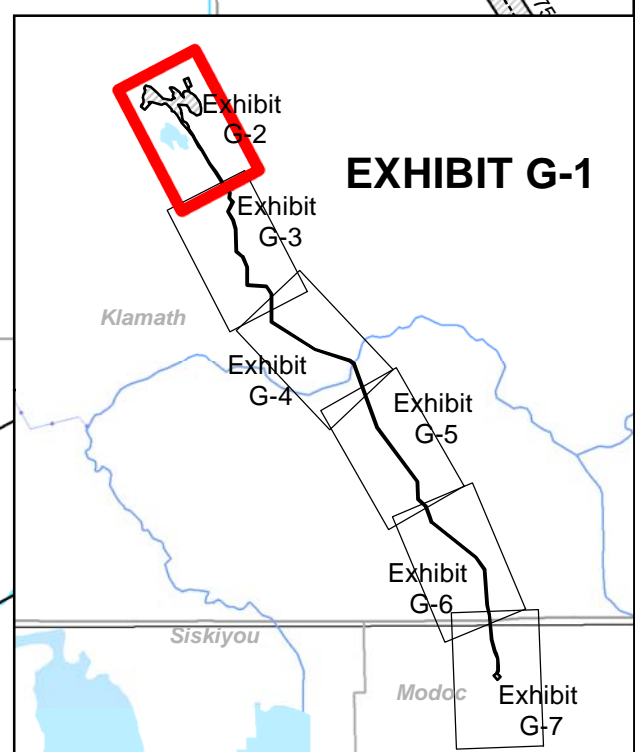
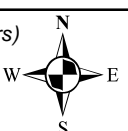
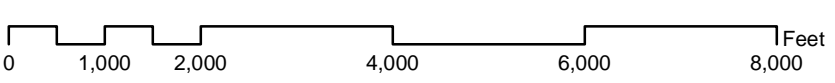
SWAN LAKE PUMPED STORAGE HYDROELECTRIC PROJECT

FERC PROJECT NO. 13318



Scale: 1" = 2,000 FT DRAWN BY: EE DECEMBER 16, 2011

Reference point coordinates and boundary azimuth/distances shown in NAD 1983 UTM Zone 10N (meters)



✕ E 616081.7636
N 4683758.966

✕ E 617637.5167
N 4681649.439

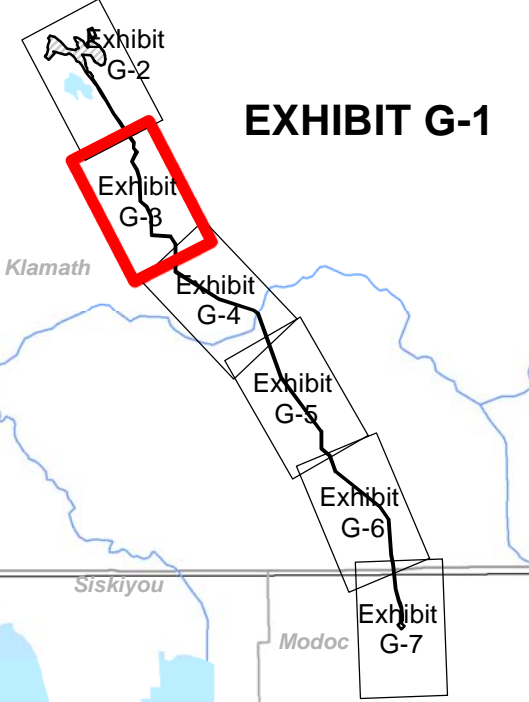


EXHIBIT G-1

Oregon

Exhibit G-1

California

Transmission Line (150' ROW each side)

✕ E 620304.522
N 4677574.848

- Legend**
- ✕ Reference Points
 - 1 Project Boundary Segment
 - ▨ Proposed Project Boundary
 - Proposed Transmission Line
- Transportation**
- Highway
 - Major Road
 - Local Road
 - Railroads
- Federal Lands**
- ▨ Forest Service
 - ▨ Bureau of Land Management

This drawing is part of the application for license made by the undersigned this 16th day of December, 2011.

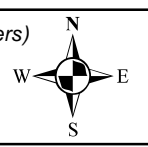
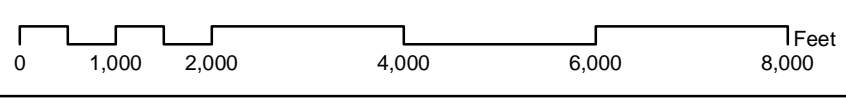
EXHIBIT G-3 SYMBIOTICS, LLC REVISION NO. 1

SWAN LAKE PUMPED STORAGE HYDROELECTRIC PROJECT FERC PROJECT NO. 13318

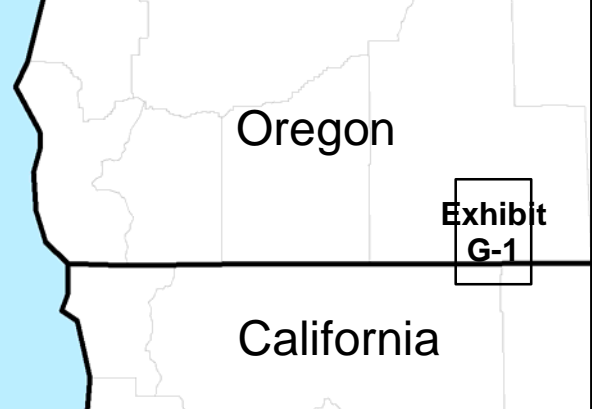
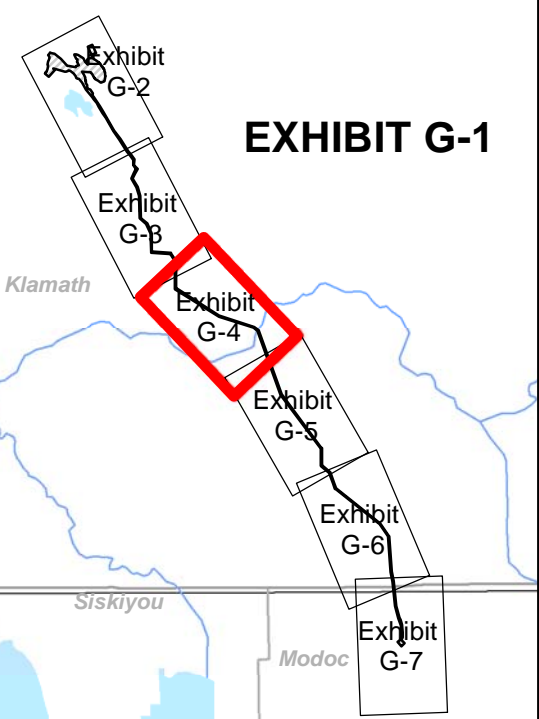
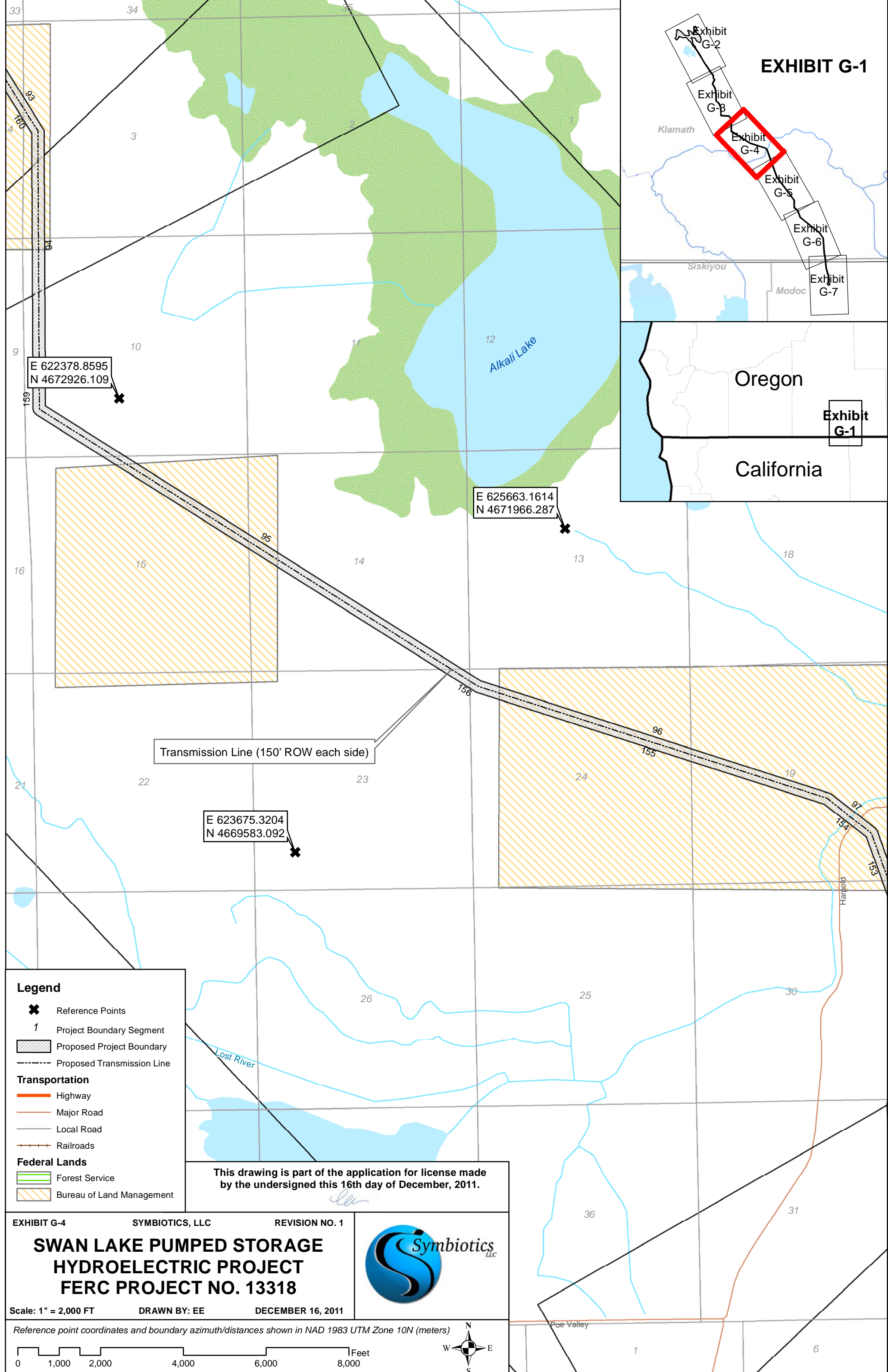


Scale: 1" = 2,000 FT DRAWN BY: EE DECEMBER 16, 2011

Reference point coordinates and boundary azimuth/distances shown in NAD 1983 UTM Zone 10N (meters)



✕ E 619471.0828
N 4674426.3



Transmission Line (150' ROW each side)

E 623675.3204
N 4669583.092

E 625663.1614
N 4671966.287

E 622378.8595
N 4672926.109

- Legend**
- ✕ Reference Points
 - 1 Project Boundary Segment
 - ▨ Proposed Project Boundary
 - Proposed Transmission Line
- Transportation**
- Highway
 - Major Road
 - Local Road
 - Railroads
- Federal Lands**
- ▨ Forest Service
 - ▨ Bureau of Land Management

This drawing is part of the application for license made by the undersigned this 16th day of December, 2011.

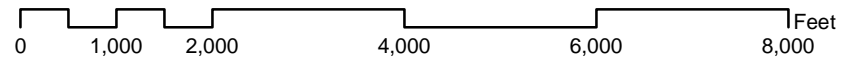
EXHIBIT G-4 SYMBIOTICS, LLC REVISION NO. 1

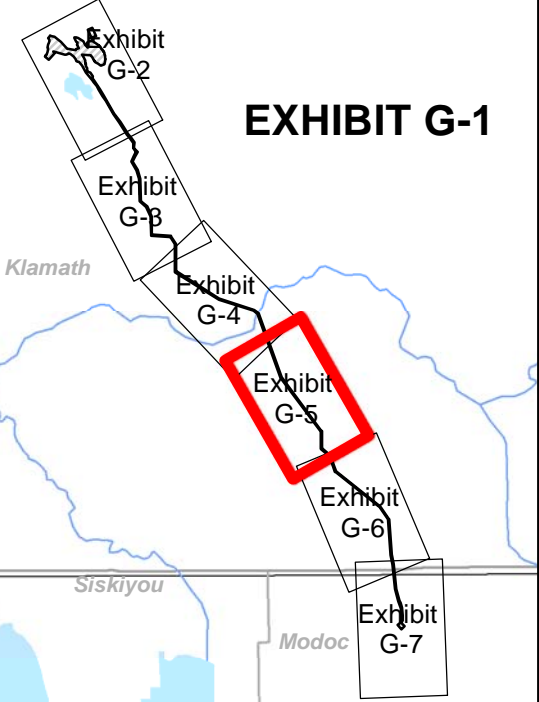
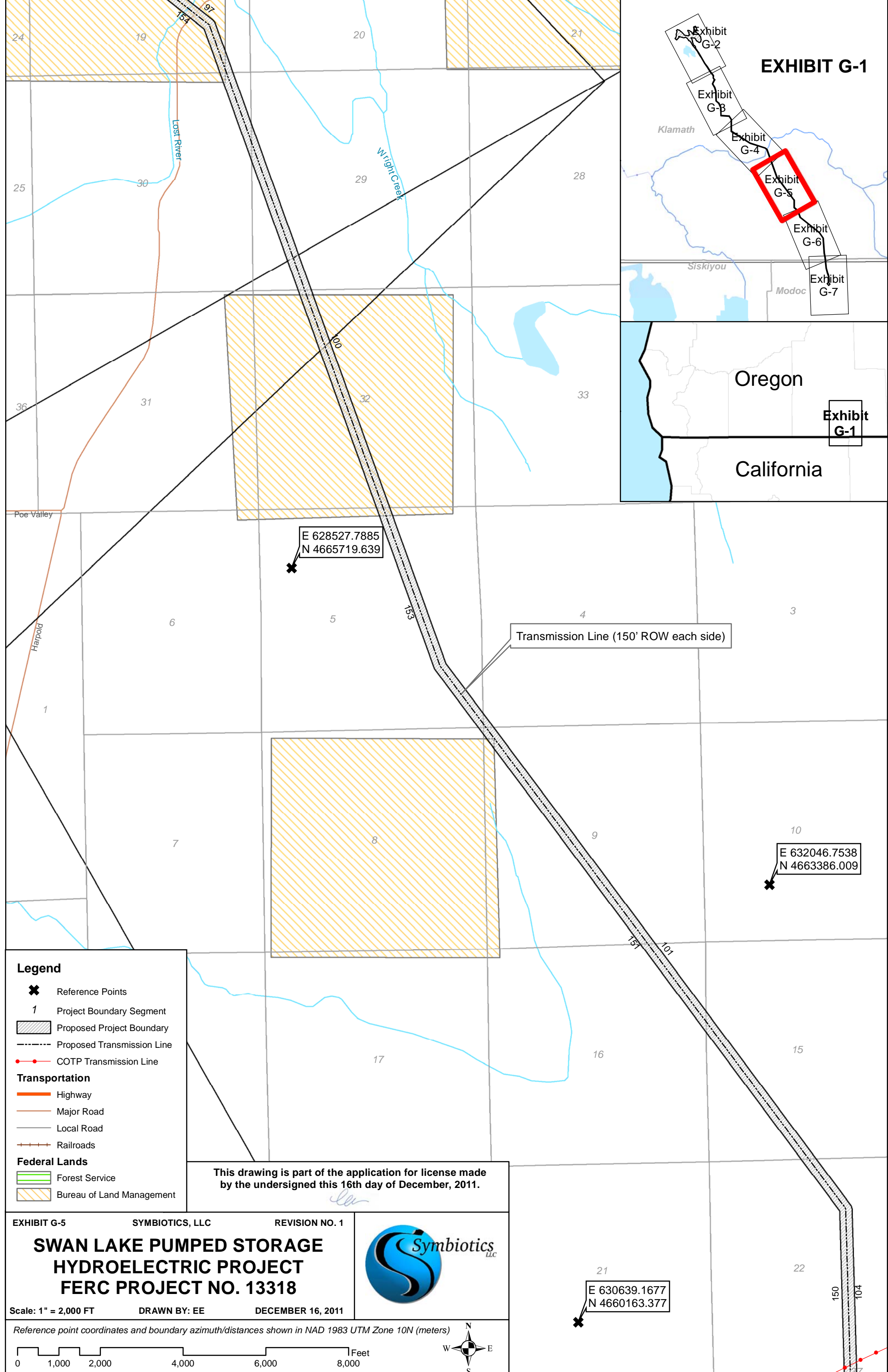
**SWAN LAKE PUMPED STORAGE
HYDROELECTRIC PROJECT
FERC PROJECT NO. 13318**



Scale: 1" = 2,000 FT DRAWN BY: EE DECEMBER 16, 2011

Reference point coordinates and boundary azimuth/distances shown in NAD 1983 UTM Zone 10N (meters)

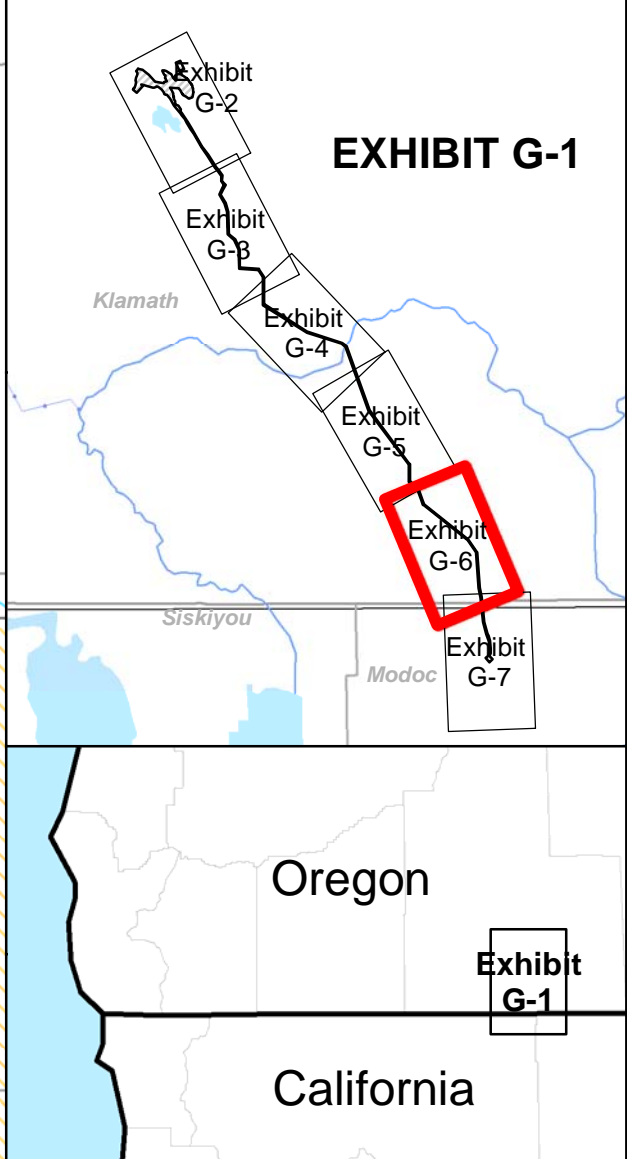
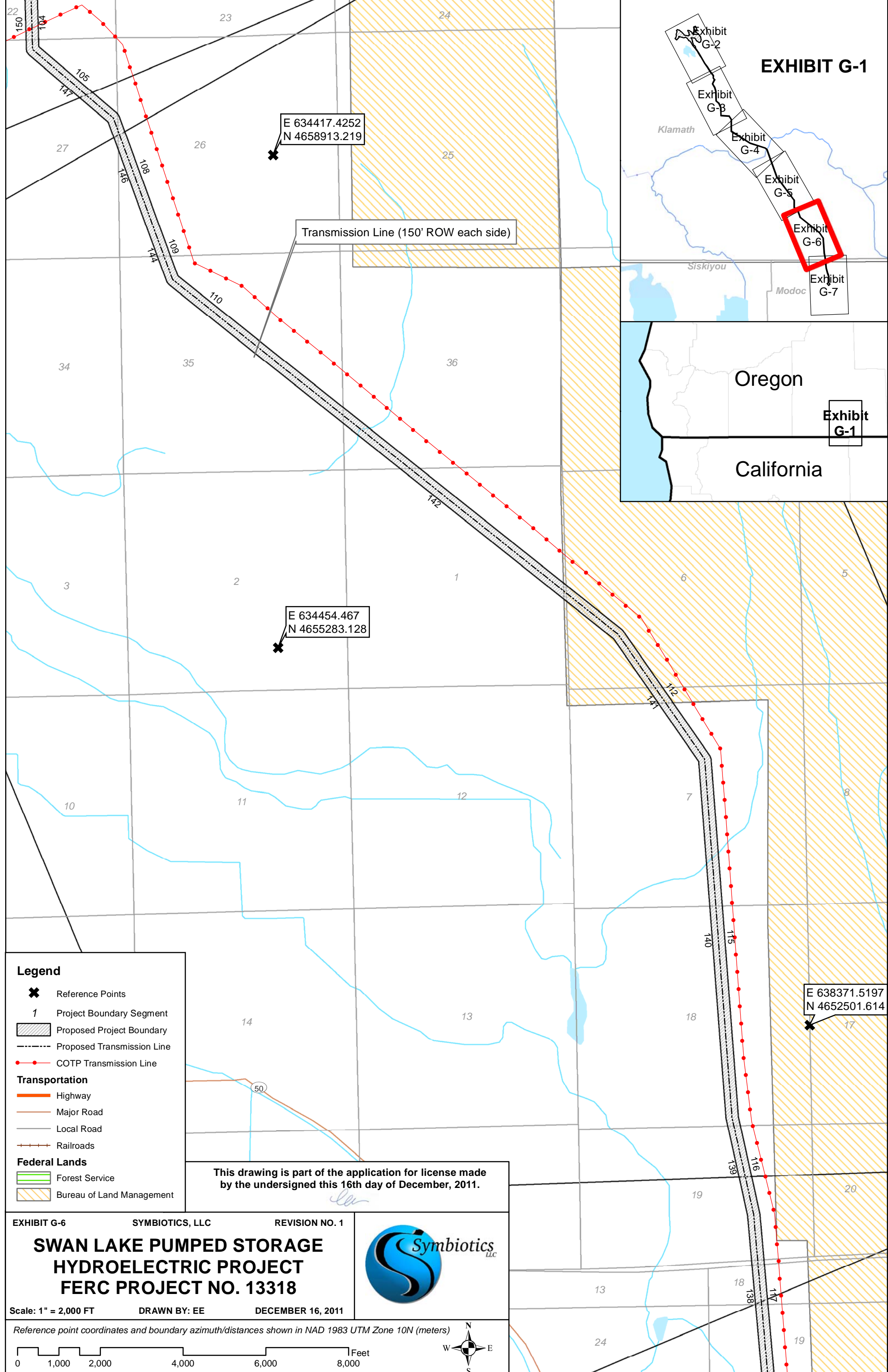




- Legend**
- Reference Points
 - Project Boundary Segment
 - Proposed Project Boundary
 - Proposed Transmission Line
 - COTP Transmission Line
- Transportation**
- Highway
 - Major Road
 - Local Road
 - Railroads
- Federal Lands**
- Forest Service
 - Bureau of Land Management

This drawing is part of the application for license made by the undersigned this 16th day of December, 2011.

EXHIBIT G-5 SWAN LAKE PUMPED STORAGE HYDROELECTRIC PROJECT FERC PROJECT NO. 13318	SYMBIOTICS, LLC Symbiotics LLC	REVISION NO. 1 Scale: 1" = 2,000 FT DRAWN BY: EE DECEMBER 16, 2011
Reference point coordinates and boundary azimuth/distances shown in NAD 1983 UTM Zone 10N (meters)		



Legend

- Reference Points
- Project Boundary Segment
- Proposed Project Boundary
- Proposed Transmission Line
- COTP Transmission Line

Transportation

- Highway
- Major Road
- Local Road
- Railroads


Federal Lands

- Forest Service
- Bureau of Land Management

This drawing is part of the application for license made by the undersigned this 16th day of December, 2011.

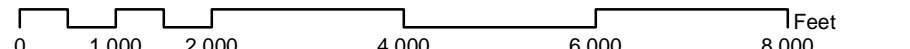

EXHIBIT G-6 SYMBIOTICS, LLC REVISION NO. 1

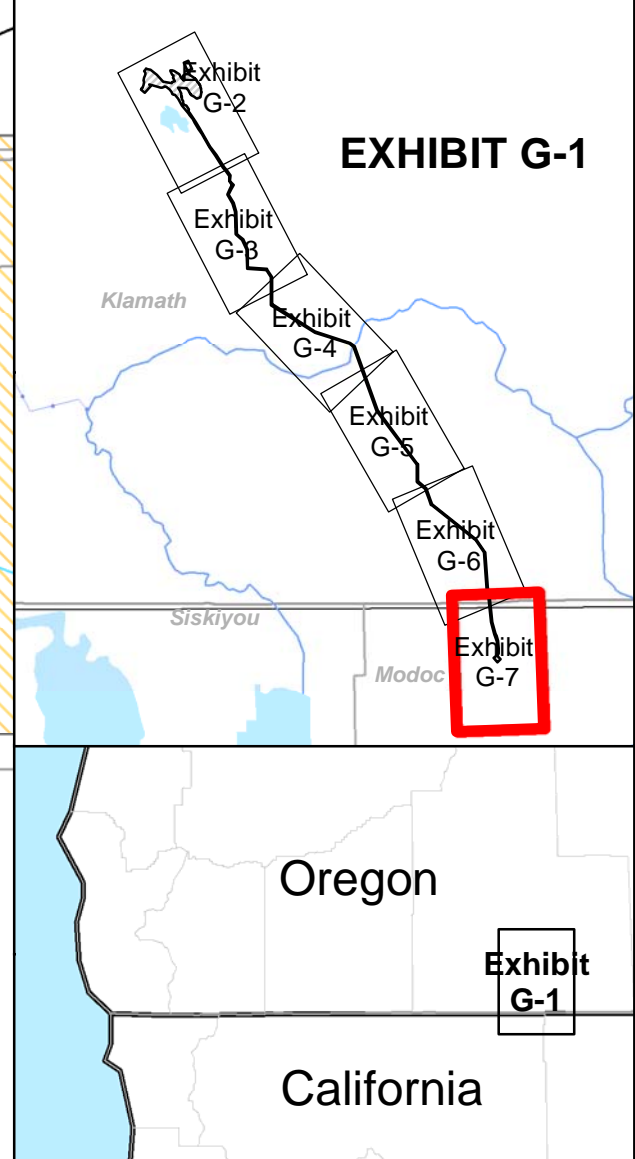
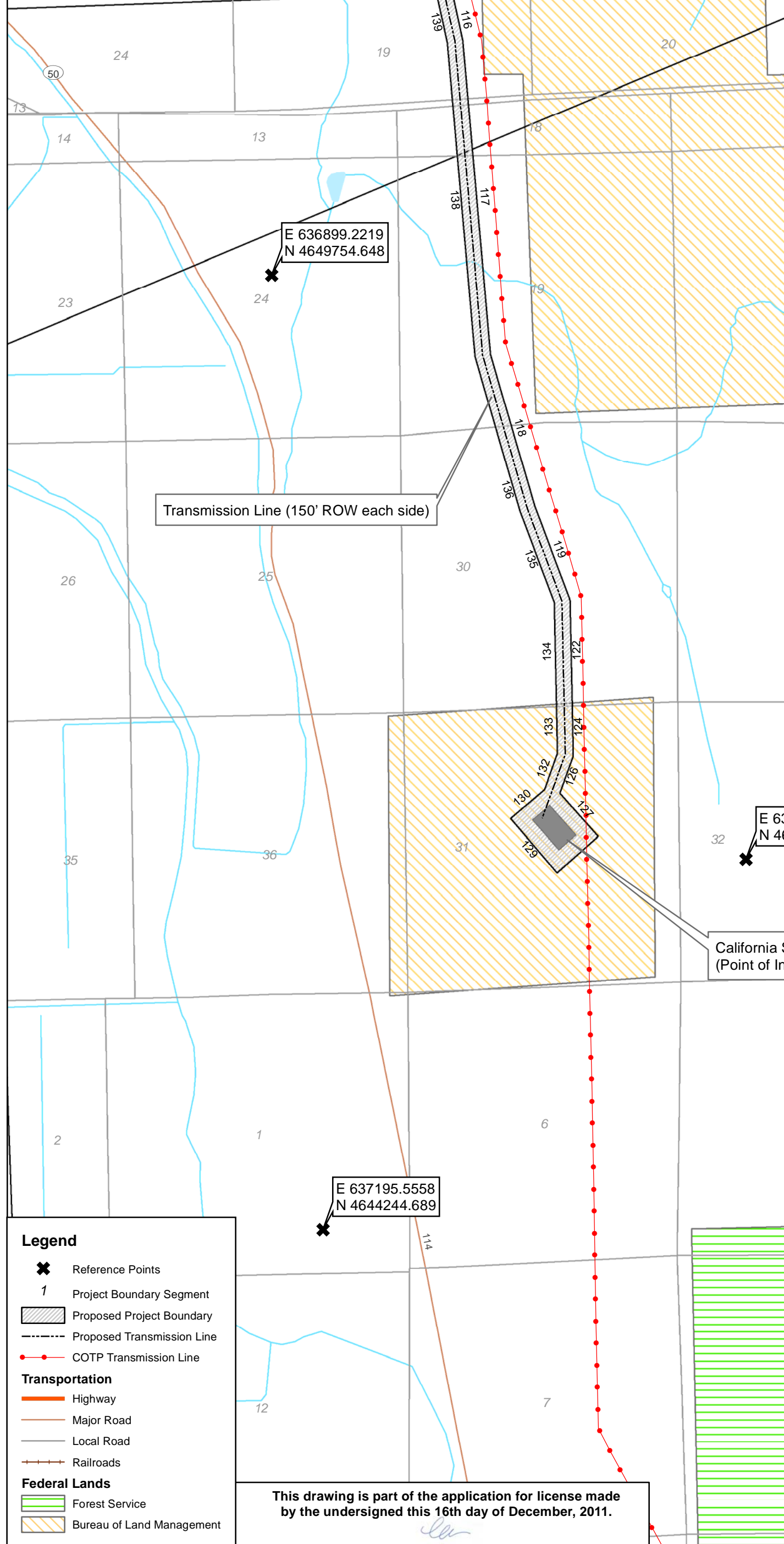
SWAN LAKE PUMPED STORAGE HYDROELECTRIC PROJECT
FERC PROJECT NO. 13318



Scale: 1" = 2,000 FT DRAWN BY: EE DECEMBER 16, 2011

Reference point coordinates and boundary azimuth/distances shown in NAD 1983 UTM Zone 10N (meters)



Transmission Line (150' ROW each side)

California Substation
(Point of Interconnection)

- Legend**
- Reference Points
 - Project Boundary Segment
 - Proposed Project Boundary
 - Proposed Transmission Line
 - COTP Transmission Line
- Transportation**
- Highway
 - Major Road
 - Local Road
 - Railroads
- Federal Lands**
- Forest Service
 - Bureau of Land Management

This drawing is part of the application for license made by the undersigned this 16th day of December, 2011.

EXHIBIT G-7 SYMBIOTICS, LLC REVISION NO. 1

SWAN LAKE PUMPED STORAGE HYDROELECTRIC PROJECT FERC PROJECT NO. 13318

Scale: 1" = 2,000 FT DRAWN BY: EE DECEMBER 16, 2011

Reference point coordinates and boundary azimuth/distances shown in NAD 1983 UTM Zone 10N (meters)

Unsurveyed Project Boundary metes and bounds for the Swan Lake Pumped Storage Hydroelectric Project (FERC No. 13318). Boundary segment numbers can be viewed on the cited Exhibits. Reference point coordinates and boundary azimuth/distances shown in NAD 1983 UTM Zone 10N (meters).

Project Boundary Segment Number	Exhibit Number	Azimuth (Decimal Degrees)	Length (meters)
1	G-2	209.054604	279.9006
2	G-2	127.874984	206.6480
3	G-2	123.496122	439.6022
4	G-2	127.012735	199.1332
5	G-2	125.655328	611.6397
6	G-2	121.551155	113.8321
7	G-2	125.916882	188.6858
8	G-2	132.906491	57.7221
9	G-2	135.968820	115.2604
10	G-2	139.347617	100.2957
11	G-2	143.901485	360.6957
12	G-2	144.424605	5.5040
13	G-2	144.952663	449.8566
14	G-2	144.839054	324.8313
15	G-2	145.543503	7.3876
16	G-2	146.309936	0.1845
17	G-2	146.285227	247.7493
18	G-2	145.425116	229.0767
19	G-2	145.839148	4.3190
20	G-2	150.515310	144.9048
21	G-2	145.097504	60.0592
22	G-2	163.072487	148.2815
23	G-2	162.204851	57.0462
24	G-2	163.287287	230.4165
25	G-2	171.408775	141.6371
26	G-2	166.947711	97.3044
27	G-2	174.013152	166.5627
28	G-2	171.408775	483.7384
29	G-2	167.614589	88.6127
30	G-2	173.077289	135.9039
31	G-2	172.087738	160.8990
32	G-2	193.196463	121.1741
33	G-2	186.568854	115.0669
34	G-2	194.109981	199.0889
35	G-2	198.677208	105.8140
36	G-2	193.196463	809.7809
37	G-2	251.565051	859.7077

Unsurveyed Project Boundary metes and bounds for the Swan Lake Pumped Storage Hydroelectric Project (FERC No. 13318). Boundary segment numbers can be viewed on the cited Exhibits. Reference point coordinates and boundary azimuth/distances shown in NAD 1983 UTM Zone 10N (meters).

Project Boundary Segment Number	Exhibit Number	Azimuth (Decimal Degrees)	Length (meters)
38	G-2	299.153212	162.0852
39	G-2	304.063695	690.5701
40	G-2	303.350828	4.1649
41	G-2	307.448448	691.3014
42	G-2	307.342380	232.7241
43	G-2	315.240051	114.1676
44	G-2	323.566636	125.7493
45	G-2	330.326256	3.4415
46	G-2	330.657265	137.8193
47	G-2	327.231501	152.9500
48	G-2	332.566897	432.4930
49	G-2	332.073616	320.2528
50	G-2	333.401713	189.2375
51	G-2	332.566897	395.5935
52	G-2	274.885203	2128.2663
53	G-2	153.676702	960.4987
54	G-2	152.870874	576.3220
55	G-2	181.287329	806.7319
56	G-2	120.963757	158.5223
57	G-2	160.820992	220.6769
58	G-2	188.297145	439.5826
59	G-2	149.237280	442.9326
60	G-2	178.363423	634.6069
61	G-2	143.343892	485.7328
62	G-2	110.806791	484.7173
63	G-2	141.745580	600.0872
64	G-2	155.556045	547.4898
65	G-2	202.833654	373.6406
66	G-2	141.519802	451.4716
67	G-2	235.885527	37.9221
68	G-2	143.061508	543.0180
69	G-2	142.980541	1172.4537
70	G-2	156.111925	1114.4395
71	G-2	150.704507	1891.3439
72	G-2	146.585993	1255.8604
73	G-2	151.927018	3786.7885
74	G-2	145.753975	2476.4222

Unsurveyed Project Boundary metes and bounds for the Swan Lake Pumped Storage Hydroelectric Project (FERC No. 13318). Boundary segment numbers can be viewed on the cited Exhibits. Reference point coordinates and boundary azimuth/distances shown in NAD 1983 UTM Zone 10N (meters).

Project Boundary Segment Number	Exhibit Number	Azimuth (Decimal Degrees)	Length (meters)
75	G-2	146.008843	1.2987
76	G-2	149.288655	3469.2822
179	G-2	329.292147	3466.1574
180	G-2	325.754108	2481.1762
181	G-2	331.915932	3802.6792
182	G-2	326.573944	1251.0678
183	G-2	330.704505	1904.0134
184	G-2	336.192055	1092.6863
185	G-2	322.968537	1146.7973
186	G-2	322.956022	557.9899
187	G-2	321.952957	2382.0266
188	G-2	331.166994	2048.2185
189	G-2	324.218926	1239.9212
190	G-2	266.054814	263.4256
191	G-2	301.607502	414.9816
192	G-2	343.996744	493.0565
193	G-2	322.594643	775.7509
194	G-2	309.122607	876.0774
195	G-2	299.475889	478.8365
196	G-2	246.370622	316.5261
197	G-2	250.709954	384.0456
198	G-2	271.847610	281.0717
199	G-2	287.136275	2275.9444
200	G-2	274.879274	745.7961
201	G-2	131.710757	558.4057
202	G-2	223.130475	2160.6067
203	G-2	312.537183	1192.9682
204	G-2	44.090620	403.7475
205	G-2	303.690068	163.3696
206	G-2	35.537678	77.9553
207	G-2	39.173658	315.6167
208	G-2	26.113913	514.7090
209	G-2	7.028396	666.5431
210	G-2	340.346176	404.1541
211	G-2	13.360218	745.1351
212	G-2	33.023868	432.3303
213	G-2	15.202409	419.4245

Unsurveyed Project Boundary metes and bounds for the Swan Lake Pumped Storage Hydroelectric Project (FERC No. 13318). Boundary segment numbers can be viewed on the cited Exhibits. Reference point coordinates and boundary azimuth/distances shown in NAD 1983 UTM Zone 10N (meters).

Project Boundary Segment Number	Exhibit Number	Azimuth (Decimal Degrees)	Length (meters)
214	G-2	5.624939	1.0636
215	G-2	15.225272	443.4748
216	G-2	320.493030	438.5793
217	G-2	24.306006	440.4317
218	G-2	41.413535	366.9293
219	G-2	106.843462	337.8363
220	G-2	108.658948	787.3709
221	G-2	131.211110	1939.4197
222	G-2	137.947586	2367.6413
223	G-2	98.972627	348.6265
224	G-2	99.218926	1753.5134
225	G-2	32.005383	256.4755
226	G-2	72.552812	664.9395
227	G-2	323.746162	674.2603
228	G-2	352.647621	283.2545
229	G-2	9.162347	569.1124
230	G-2	312.878904	346.2629
231	G-2	327.011478	615.8239
232	G-2	333.434949	405.2701
233	G-2	22.249024	215.4040
234	G-2	94.484606	463.5872
235	G-2	109.440035	490.1088
236	G-2	126.326826	1529.7538
237	G-2	151.837473	1017.6235
238	G-2	140.877393	876.0774
239	G-2	348.690068	693.1185
240	G-2	358.451842	670.8414
241	G-2	59.381395	515.9838
242	G-2	90.842524	616.2905
243	G-2	49.993744	331.2634
244	G-2	339.341090	590.7776
245	G-2	338.687526	2169.1986
246	G-2	70.016893	1166.7627
247	G-2	158.780708	2153.2442
248	G-2	249.918023	897.3325
249	G-2	160.615484	518.7616
250	G-2	185.440332	191.1655

Unsurveyed Project Boundary metes and bounds for the Swan Lake Pumped Storage Hydroelectric Project (FERC No. 13318). Boundary segment numbers can be viewed on the cited Exhibits. Reference point coordinates and boundary azimuth/distances shown in NAD 1983 UTM Zone 10N (meters).

Project Boundary Segment Number	Exhibit Number	Azimuth (Decimal Degrees)	Length (meters)
77	G-3	142.068310	1265.8220
78	G-3	146.200279	1395.7536
79	G-3	186.348386	1295.2378
80	G-3	140.683413	1275.3113
81	G-3	209.010363	1314.2818
82	G-3	208.981802	1269.8456
83	G-3	152.359799	2416.7701
84	G-3	164.798436	2255.2842
85	G-3	179.588001	5404.5603
86	G-3	132.461058	1921.1666
87	G-3	145.501503	67.6910
88	G-3	158.757806	2756.8998
89	G-3	180.080872	0.4649
90	G-3	180.177487	4327.0902
91	G-3	95.854960	4501.0167
92	G-3	109.802428	72.3099
93	G-3	136.589850	66.6673
94	G-3	149.737354	2232.3595
161	G-3	329.429450	2054.8620
162	G-3	275.854963	4561.1152
163	G-3	295.427359	100.4996
164	G-3	335.625060	105.6751
165	G-3	0.172946	4444.5291
166	G-3	338.541721	2638.6026
167	G-3	312.487327	1968.3578
168	G-3	333.750121	77.6460
169	G-3	359.611965	5440.7897
170	G-3	344.889190	2186.8571
171	G-3	331.823788	2562.9568
172	G-3	29.533448	1451.0494
173	G-3	29.185926	0.0417
174	G-3	28.997738	1095.1630
175	G-3	322.052094	1204.0764
176	G-3	6.350809	1301.9233
177	G-3	325.873977	1275.6363
178	G-3	322.121227	1289.1694
95	G-4	181.375327	6668.0329

Unsurveyed Project Boundary metes and bounds for the Swan Lake Pumped Storage Hydroelectric Project (FERC No. 13318). Boundary segment numbers can be viewed on the cited Exhibits. Reference point coordinates and boundary azimuth/distances shown in NAD 1983 UTM Zone 10N (meters).

Project Boundary Segment Number	Exhibit Number	Azimuth (Decimal Degrees)	Length (meters)
96	G-4	123.976110	12442.4153
97	G-4	109.558567	8887.5344
98	G-4	129.766941	1374.6000
99	G-4	145.508487	81.3893
100	G-4	161.565051	1.6641
101	G-4	161.885651	16455.1050
154	G-4	341.885649	16434.3149
155	G-4	309.766949	1304.6088
156	G-4	289.500025	8835.6620
157	G-4	303.962444	12573.4596
158	G-4	322.613050	95.8712
159	G-4	351.320396	52.4576
160	G-4	1.390813	6684.0401
102	G-5	144.912473	16374.1608
103	G-5	166.874980	68.1230
104	G-5	180.000000	0.1355
105	G-5	180.051736	4235.8377
106	G-5	132.014325	2500.7313
148	G-5	312.009650	2520.2206
149	G-5	326.629745	75.7229
150	G-5	350.625262	48.8688
151	G-5	0.051733	4255.3193
152	G-5	324.906233	16325.9856
153	G-5	333.396227	44.2895
107	G-6	140.624638	29.4050
108	G-6	153.896005	39.9134
109	G-6	161.541131	2716.2149
110	G-6	161.495324	1398.2216
111	G-6	130.235796	13731.7691
112	G-6	138.242960	41.7885
113	G-6	146.955697	3670.5753
114	G-6	161.602899	75.8592
115	G-6	176.784742	2.7961
116	G-6	177.317920	8674.5994
117	G-6	169.123346	2407.1605
140	G-6	349.120322	2407.0800
141	G-6	357.317748	8647.4800

Unsurveyed Project Boundary metes and bounds for the Swan Lake Pumped Storage Hydroelectric Project (FERC No. 13318). Boundary segment numbers can be viewed on the cited Exhibits. Reference point coordinates and boundary azimuth/distances shown in NAD 1983 UTM Zone 10N (meters).

Project Boundary Segment Number	Exhibit Number	Azimuth (Decimal Degrees)	Length (meters)
142	G-6	326.955875	3605.9833
143	G-6	310.235795	13751.6905
144	G-6	325.743049	80.2074
145	G-6	341.495272	1440.8886
146	G-6	341.465751	0.1197
147	G-6	341.541131	2676.7391
118	G-7	176.629674	5981.7681
119	G-7	165.389518	2989.0856
120	G-7	161.178030	1868.0743
121	G-7	170.588832	49.0545
122	G-7	180.203109	1.0180
123	G-7	180.388890	1892.0227
124	G-7	180.355865	0.0528
125	G-7	180.408975	1014.6006
126	G-7	190.982526	55.0498
127	G-7	201.556228	719.7874
128	G-7	140.259238	1096.4390
129	G-7	229.869942	1044.4842
130	G-7	321.247803	1363.6717
131	G-7	51.572650	831.3458
132	G-7	73.125578	3.1102
133	G-7	21.556242	740.6501
134	G-7	0.408951	986.5743
135	G-7	0.388897	1866.6114
136	G-7	341.178031	1848.2040
137	G-7	345.432400	3048.6413
138	G-7	356.441365	0.9937
139	G-7	356.629673	5986.6483